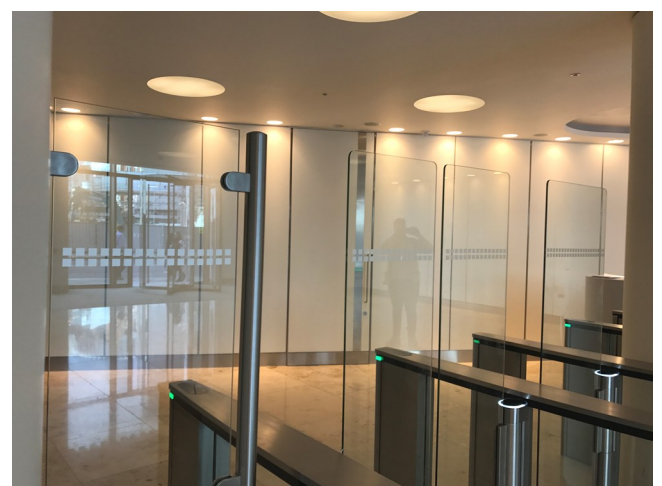
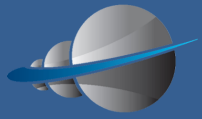


## Obstacle Types

As standard the PG300 range is fitted with 900mm high plexiglass. This provides better protection against intruder abuse as it is much harder to brake than toughened glass.



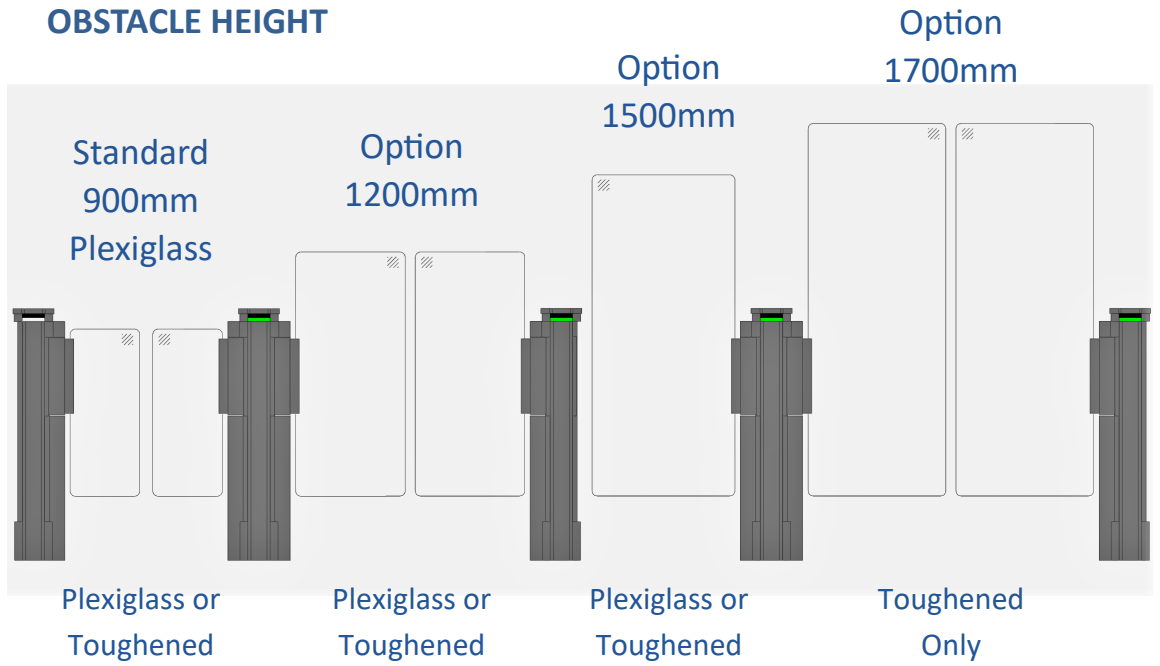


# OBSTACLE TYPES

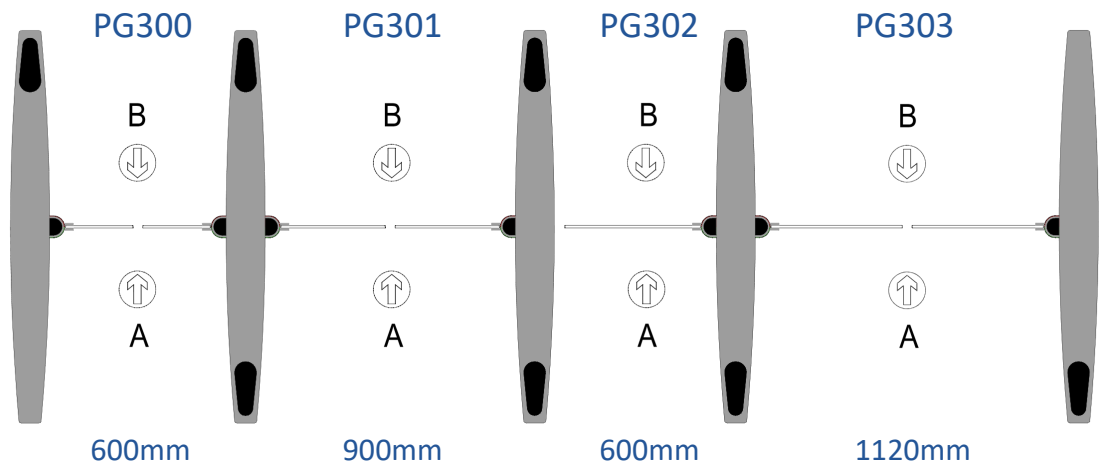
## OBSTACLE OPTIONS

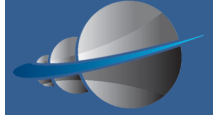
1. Various heights.
2. Various widths.
3. Different types of material.
4. Different types of manifestation.

## OBSTACLE HEIGHT



## OBSTACLE WIDTHS





## MATERIAL

As an option to plexiglass, the PG300 range can be fitted with 8mm thick toughened safety glass manufactured to EN 12150-1.

As standard the toughened glass is fitted with a laminate, allowing the glass to meet BS EN 12600.

## MANIFESTATION

Building regulations states that people with impaired vision should be in no doubt as to the location of glass entrance doors, especially when they are within a glazed screen.

To satisfy this requirement the gate obstacles must be clearly defined with manifestation on the glass at two levels, 850 to 1000mm and 1400 to 1600mm above the floor,

contrasting visually with the background seen through the glass (both from the inside and outside) and in all lighting conditions

Manifestation can be a logo or sign at least 150mm high (repeated if on glass screen), or a decorative feature such as broken lines or continuous banks, at least 50mm high.

Our standard glass manifestation is a 1m strip with frosted dot 50mm Dia and 100mm apart. However we can supply any form of manifestation and on the plexiglass we can laser etch company logo inside the plexiglass.

## NOTE(s)

- 1500 and 1700 mm high obstacles are not recommended when using a free standing surface mount plinth. If this is required then the surface plinth must run from wall to wall with the plinth attached to the walls. We also recommend that if possible one fixing is used in the end of each cabinet to secure the plinth to the floor.

# HOW TO CONTACT US

## UK Head Office

### **Evolve Security Products Ltd.**

Unit 4, Kenyons Yard,  
Weyhill Road,  
Andover,  
Hampshire.  
ENGLAND  
SP10 3NP

**t:** 0044 1264 334786

**e:** Sales@EvolveSecurityProducts.com

**w:** EvolveSecurityProducts.com

## HK Head Office

### **Evolve Autogate Products Ltd.**

Flat C,4/F  
Lladro Center,  
No., 72 Hoi Yuen Road,  
Kwun Tong,  
Kowloon.  
HONG KONG

**t:** 00852 35231568

**e:** info@Evolve-Autogate.com

**w:** Evolve-Autogate.com

**[Click Here For Full List of  
Global Contacts](#)**

**“Evolving the way you manage your pedestrian access.”**